

TRANSFORM - SMART CLIMATE KIC CITY TRANSFORMATION

Hans Houf

Online Conference with Local Stakeholders

17 November 2020

Sofia

Supported by



**We Are the First Generation
that Can End Poverty, the
Last that Can End Climate
Change**

Bah Ki-moon

Let us start at
our homes

and

TRANSFORM

our Live and
Living
environments



EU CLIMATE STRATEGIES AND OBJECTIVES

TARGET FOR REDUCING GREENHOUSE GAS compared with 1990 level

20%

EU climate and energy package until

2020

40%

COMMISSION OBJECTIVE
a climate-neutral Europe

TARGET FOR RENEWABLE ENERGY % renewable energy

20%

EU climate and energy targets until

2030

32%

EU climate strategy until

2050

TARGET FOR ENERGY EFFICIENCY % improvement

20%

32,5%

TRANSFORM GOALS

Start 1/7/2020 – End 31/12/2020

Smart Energy Services for homes (15-30%)

Full energy Retrofits of homes (50-90%)

Smart Health & Wellbeing for inhabitants (lower health cost)



<p>ISOLAMENTO DELLA FACCIATA</p> <p>Le facciate vengono isolate dall'esterno con pannelli di materiale a scelta e di opportuno spessore, fissati con tasselli e poi rifiniti secondo l'aspetto esteriore desiderato.</p> <p>PRO Ottimo isolamento termico.</p> <p>CONTRO Alto spessore delle facciate.</p> <p>PERFORMANCE ENERGETICHE: ●●●○ COSTI: ●●●○ TEMPI DI REALIZZAZIONE: ●●●○ MANUTENZIONE: ●●●○ CAMBIO CLIMA: ●●●○</p>	<p>ISOLAMENTO DEL TETTO INCLINATO</p> <p>Se il sottotetto è ricoperto, il tetto viene ricoperto dalla scelta del opportuno spessore, impermeabilizzato e coperto d'aria per la ventilazione naturale e rivolto a piacere.</p> <p>PRO Buon isolamento termico e assenza di condensaione.</p> <p>CONTRO Intervento complesso e costoso.</p> <p>PERFORMANCE ENERGETICHE: ●●●● COSTI: ●●●● TEMPI DI REALIZZAZIONE: ●●●● MANUTENZIONE: ●●●● CAMBIO CLIMA: ●●●●</p>	<p>POMPA DI CALORE</p> <p>Le pompe di calore riscaldano come da una più calda, utilizzando l'aria, acqua o terra.</p> <p>PRO Ottima performance energetica e riduzione delle emissioni di gas serra.</p> <p>CONTRO Correggibile solo in abbinamento ad un isolamento idoneo del proietto o in presenza di un sistema di emissione tipo pannelli radianti a radiazioni infrarosse a bassa temperatura.</p> <p>PERFORMANCE ENERGETICHE: ●●●● COSTI: ●●●● TEMPI DI REALIZZAZIONE: ●●●● MANUTENZIONE: ●●●●</p>
---	--	---



Project Transform – helicopter overview

Objectives:

Covid-19 & Climate Change created the need for us **to become more resilient towards external changes**

1. **Digital Transformation of Homes:** 15% energy reduction
2. **Full Transformation of Homes:** 70% energy reduction
3. **Personal Wellbeing Service:** lower health cost

Start a Process

2020: 10 digital transformed demonstration homes

2021: 250 Digital-transformations, 10 Full transformations

2022: 5,000 Digital-transformations, 1,000 Full transformations

2023: 15.000 Digital-transformations, 10,000 Full transformations

Partners:

JIBE Company

Virtech

TopSportsLab

Sofia Development Agency

Bankers without Boundaries

Climate KIC

Problems to deal with

1. Ensure that the citizens & city stakeholders want to support the goals of TRANSFORM long term
2. Large Scale use of Personal Data > a scalable GDPR solution
3. Create a solution for Energy-Poverty

The TRANSFORM project approach

1. Ensure that the citizens & city stakeholders want to support the goals of TRANSFORM

Demonstrate
10 homes &
20 people

Communication with stakeholders
& citizens on how to scale up!

2. Large Scale use of Personal Data > a scalable GDPR solution

dataU as GDPR compliant platform

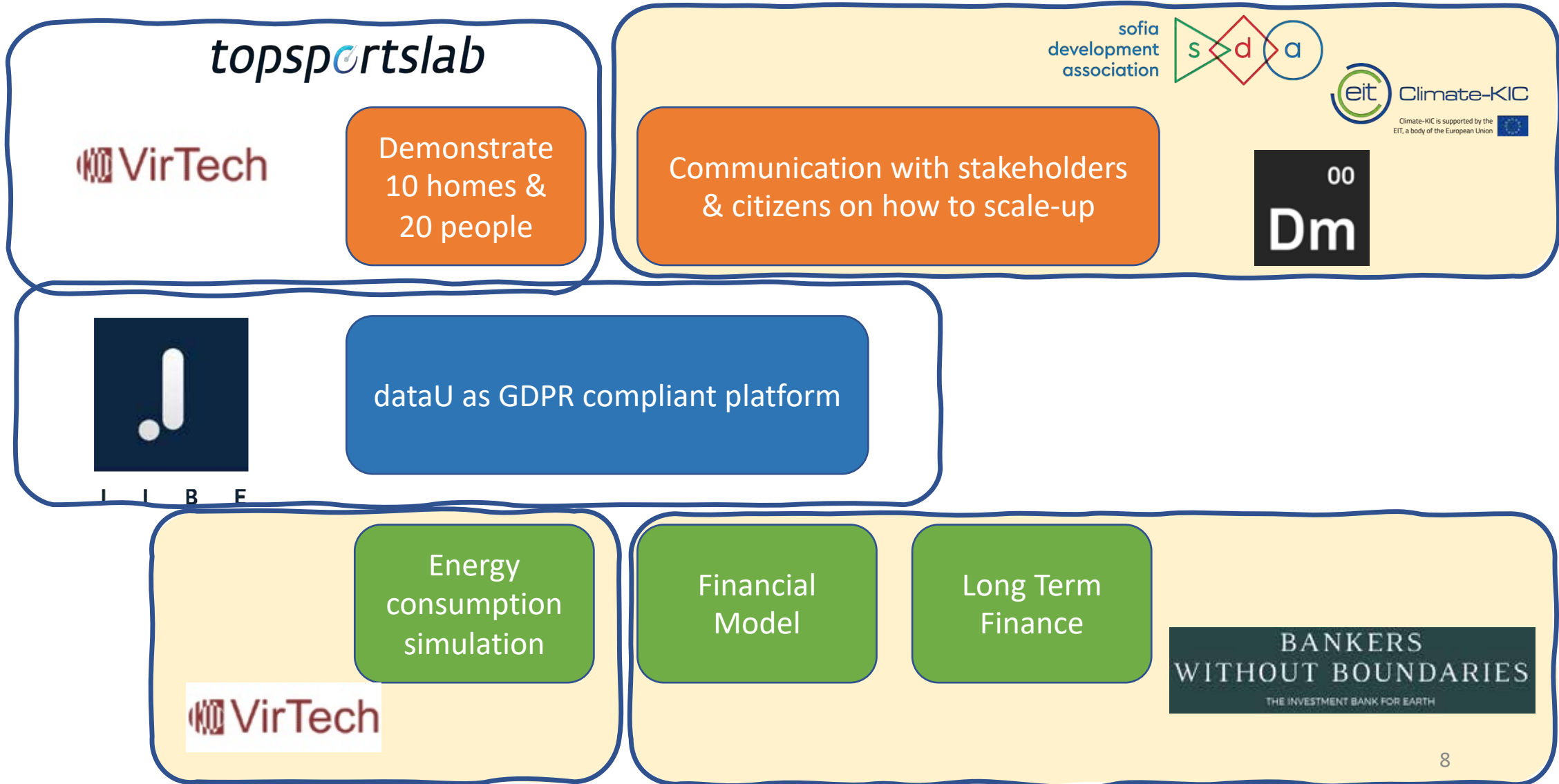
3. Create a solution for Energy-Poverty

Energy
consumption
simulation

Financial
Model

Long Term
Finance

Transform and the Partners



OPPORTUNITIES

GDPR Compliant Services

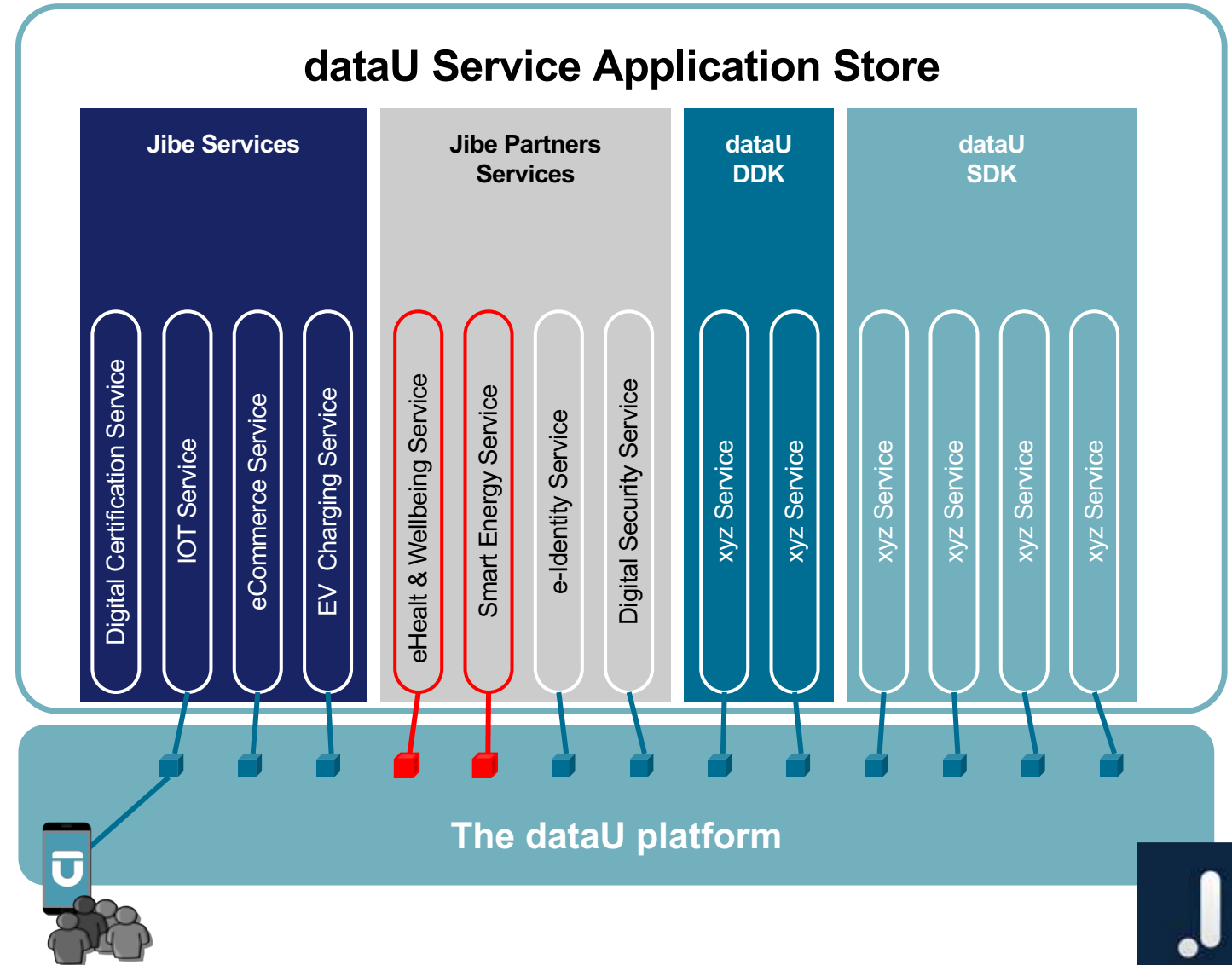
- DataU Platform
- DataU Service Application Store:
 - Digital Certification
 - IOT
 - eCommerce
 - Electric Vehicle Charging Services
 - eHealth & Wellbeing*
 - Smart Grid*
 - e-Identity*
 - Digital Security*

Jibe Company Development Kits:

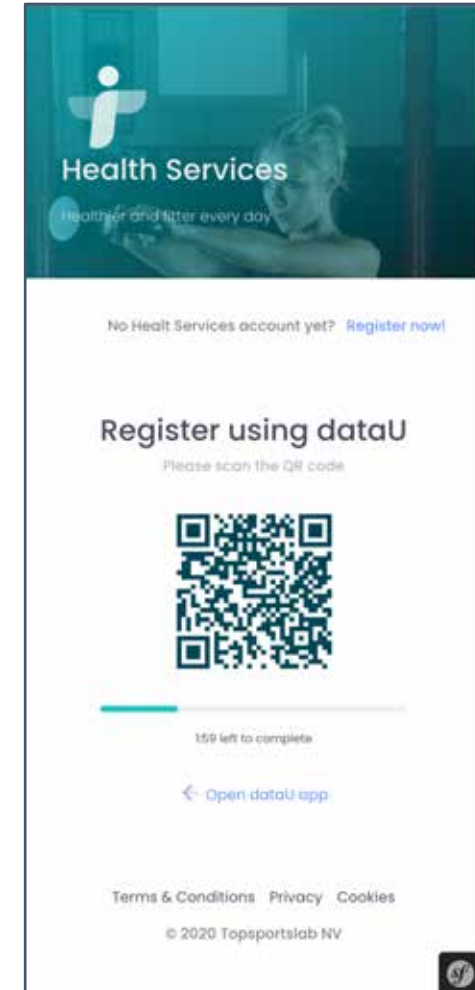
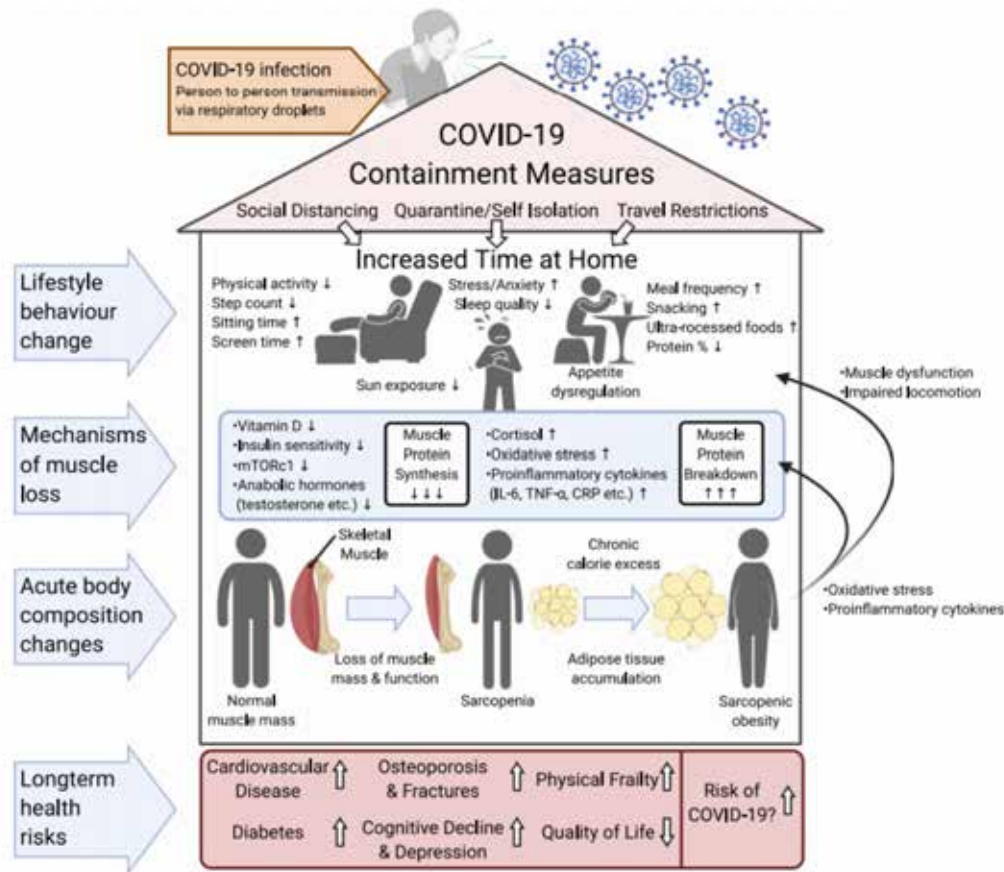
- dataU Dashboard Development Application (DDK)
- dataU Software Development Kit (SDK)

Jibe Company will develop APIs to connect directly to the FIWARE and OPENHAB platforms, enabling the development of new services using the building blocks from the platform.

**developed by Jibe's partners.*



Smart Health & Wellbeing

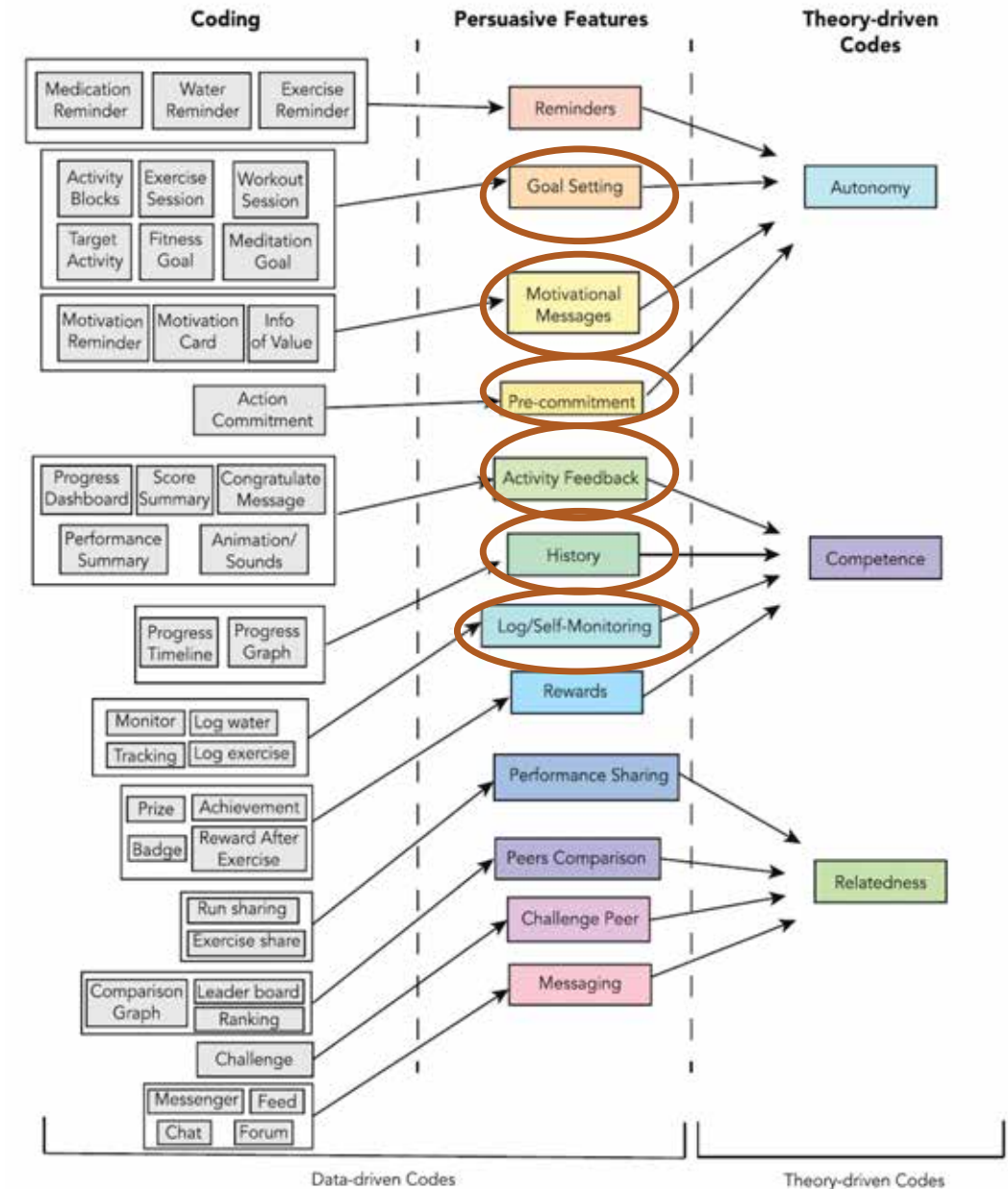


How does a bad physical and mental health impact or overall health?

The vicious circle of covid-19, also applicable to many other non-communicable diseases.

Smart Health & Wellbeing

- Physical and mental health
- Aimed at autonomy & competence, in a second stage also relatedness
- Feedback & individual health advice
- Data-informed + human coach



Smart Energy Services



Improve
comfort



Improve
control



Smart energy
assistant



Lower energy
consumption

